

DAILY CLEANING OF THE A400/A600/A800/A1000



Your responsibility for the perfect coffee experience.
 The perfect coffee experience depends on a perfectly cleaned coffee machine. Increase your product quality!
 Clean your coffee machine at least once a day and more frequently if necessary.
 Follow the 5-step method for all removable parts.
 Please observe the **warnings** on the screen.

Required accessories:

- Cleaning tablets
- Microfiber towel
- Brush set
- Milk system cleaning agent (depending on the design version)

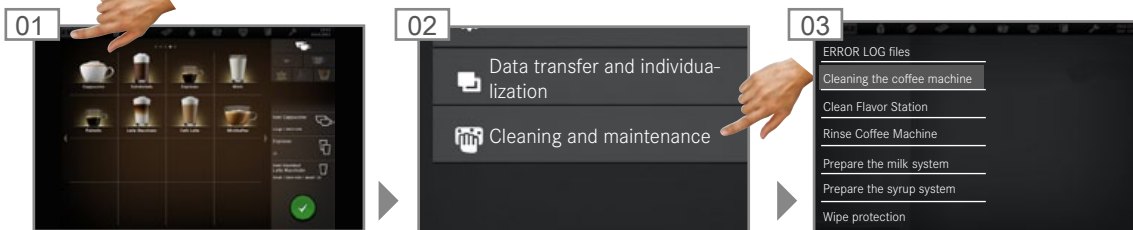


Symbol for cleaning

5-step method for cleaning removable parts



Starting the automatic cleaning on the screen for the A400/A600/A800 with EasyClean



Follow the instructions on the user interface and confirm with "Continue".
 The machine guides you to the next step.

When the cleaning cycle is complete, the machine either switches back to the maintenance level or the energy saving mode.
 Your service technician can set the desired option for you.